

Solstice at Fiddymment Ranch

Presented to
Fiddymment Farm Neighborhood Association
02.09.2021

BY



Solstice at Fiddymment Ranch // Site Plan

- Site zoned for High Density Residential for up to 277 units
- 189 for rent residences proposed
- Parking provided: 404 spaces (378 covered)



Solstice at Fiddymment Ranch // Residences

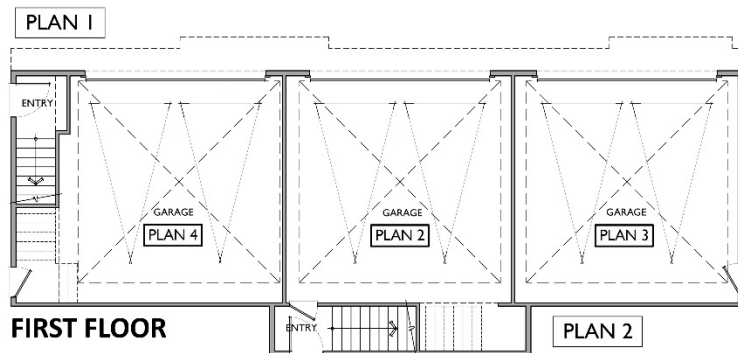
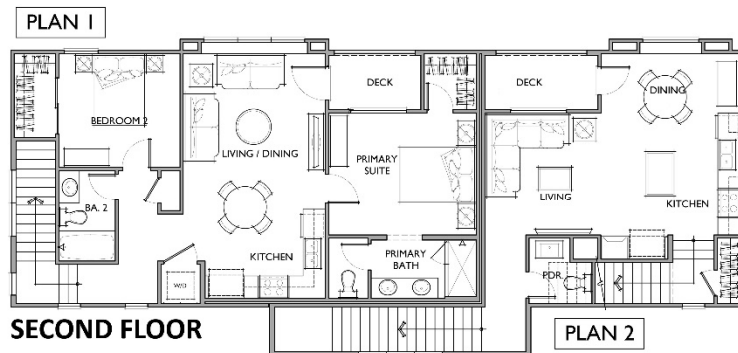
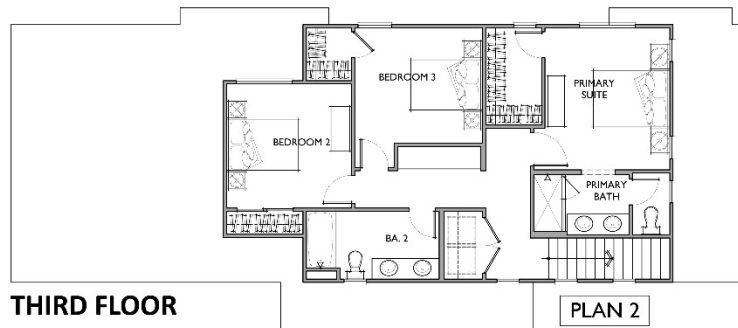
- Modern Farmhouse architecture – 4 Plan Types
- Two-story and three-story homes
- Density consistent with Specific Plan
- Variety of elevation styles, color schemes, and textures



Solstice at Fiddymment Ranch // Residences

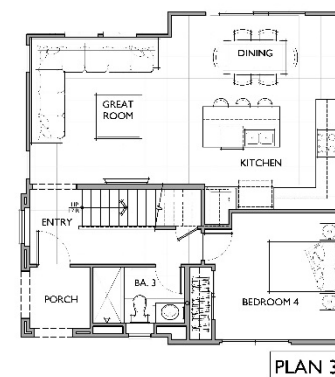
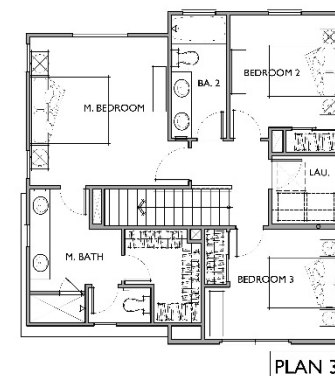
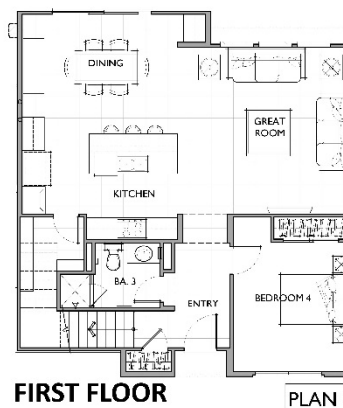
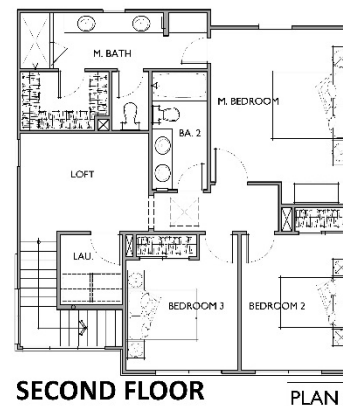
Plan 1 - 2 bed / 2 bath

Plan 2 - 3 bed / 3.5 bath



Plan 3 - 4 bed / 3 bath

Plan 4 - 4 bed / 3 bath



Solstice at Fiddymment Ranch // Clubhouses

Two Clubhouse Areas

- Club room / lounge spaces
- Pool / wading pool / spa
- Business center with private work pods
- Indoor and outdoor fitness spaces



Clubhouse 1

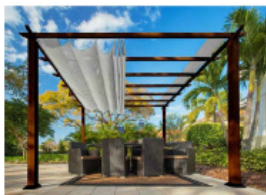


Clubhouse 2



Solstice at Fiddymment Ranch // Common Area

Proposed Common Area Features



Pool / Spa

Play Areas

Activity Areas

Shaded Areas

Solstice at Fiddymment Ranch // Projected Schedule

Milestones

- Prairie Town Way Improvements (by others):
 - Projected Spring - Summer 2021
- Site Land Development:
 - Projected Summer 2021 – Spring 2022
- Residence Construction Start:
 - Projected Early 2022
- First Occupancies:
 - Projected Late 2022

Questions / Comments