

# Protecting Roseville's Water Supply

Sean Bigley, Government Relations Analyst

# Overview

- California's water system
- The Delta – where and what; the role it plays
- Primary concerns in the Delta
- Bay Delta Conservation Plan
- Potential impacts to Folsom Reservoir
- What you can do to protect your community's water supply

# Storage and Conveyance

Hetch Hetchy  
(1913)

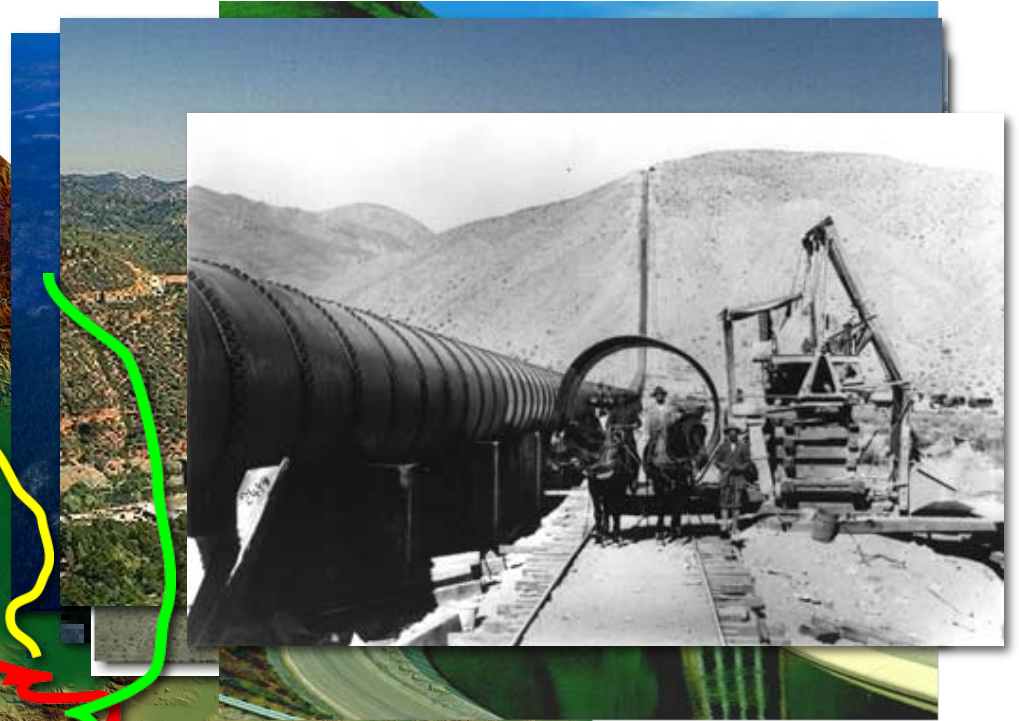
Mokelumne  
Aqueduct  
(1929)

Central Valley  
Project (1937)

State Water  
Project (1960)

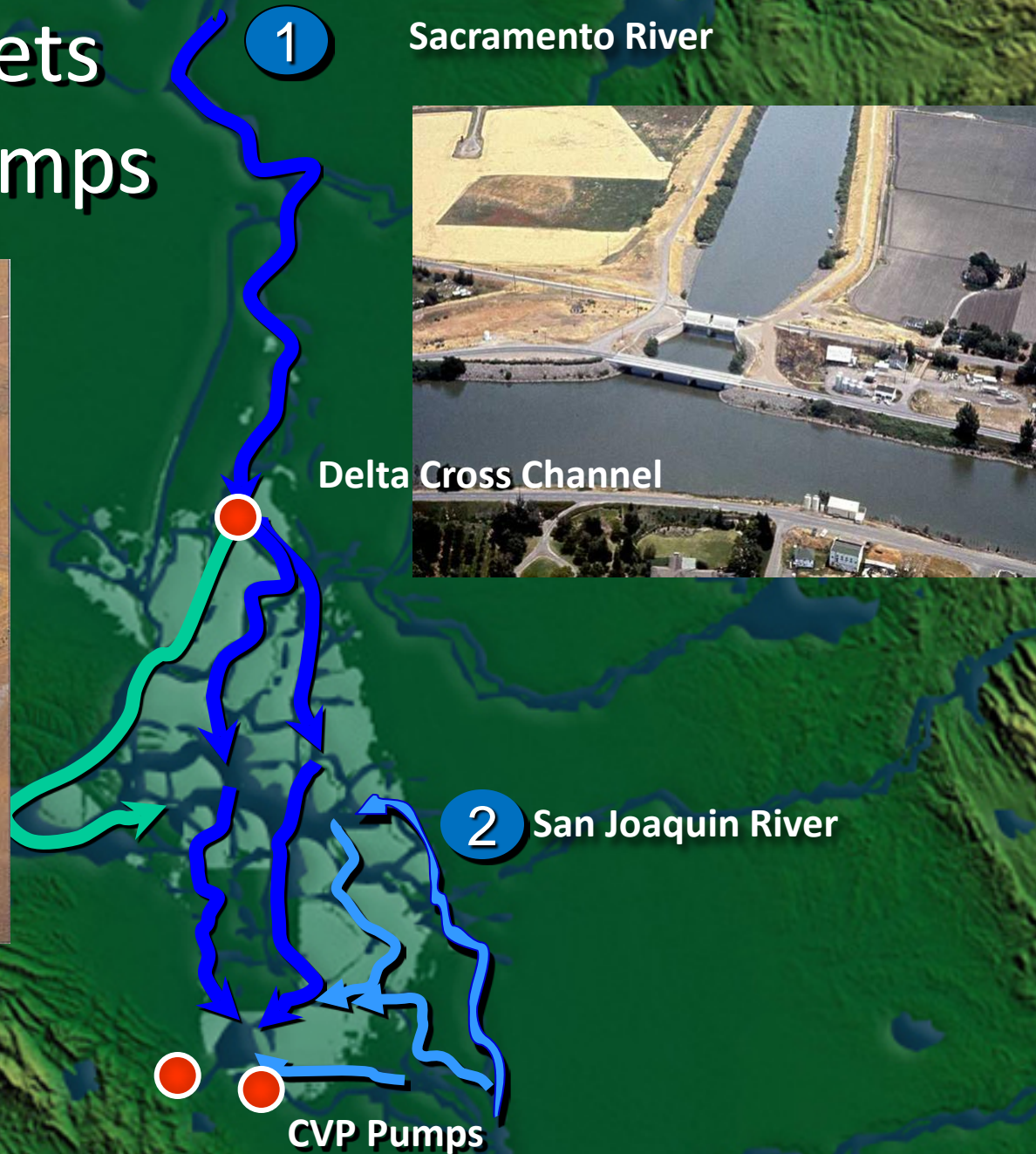
Los Angeles  
Aqueduct (1908)

Colorado River  
Aqueduct (1932)



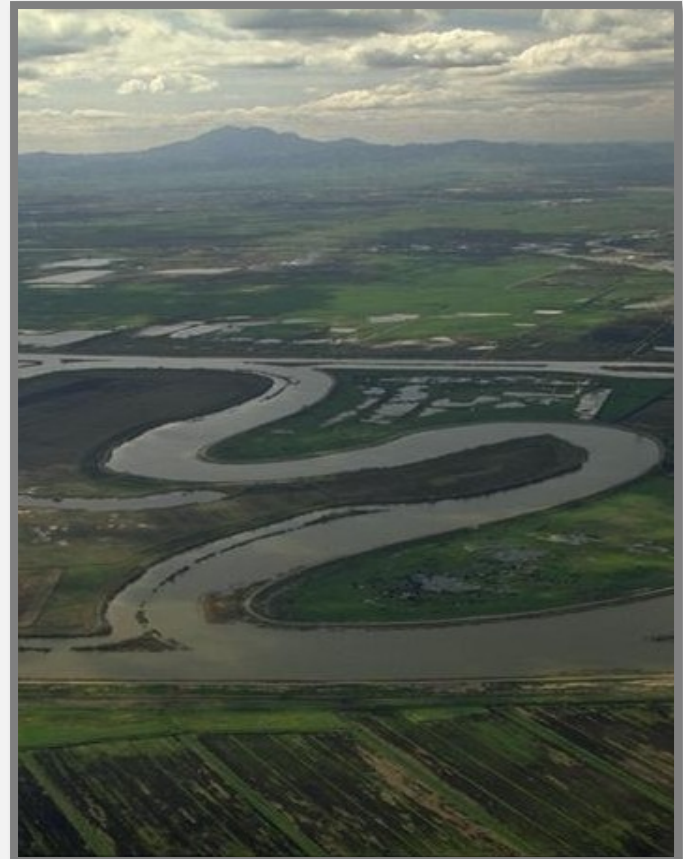


# How Water Gets to the Delta Pumps



# Primary Bay-Delta Issues

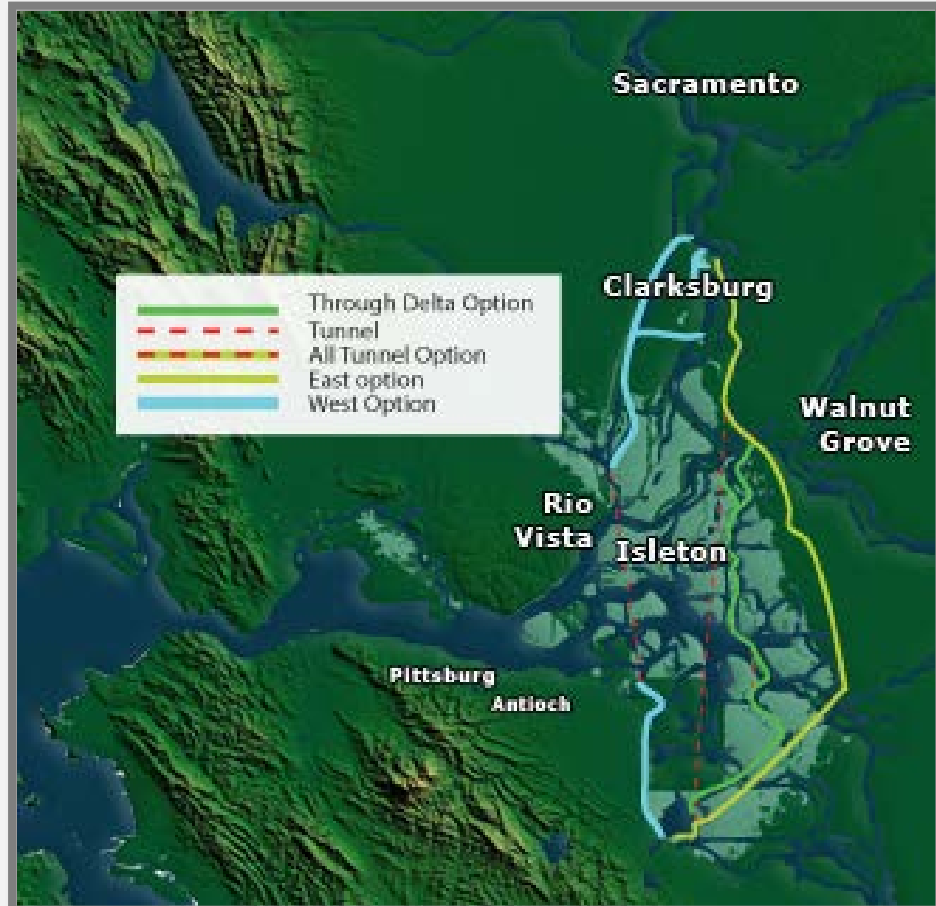
- Fishery decline
- Invasive species
- Subsidence (sinking ground)
- Levee stability
- Seismic risk
- Climate change and sea level rise
- Urbanization
- Water quality





# Bay Delta Conservation Plan Objectives

- Move the export intakes upstream, safe from sea level rise and threatened Delta species.
- 35-mile-long tunnels under Delta moving Sacramento River water to export pumps.
- Restore habitat.
- 50-year permits under Endangered Species Act to cover pumping water out of Delta.



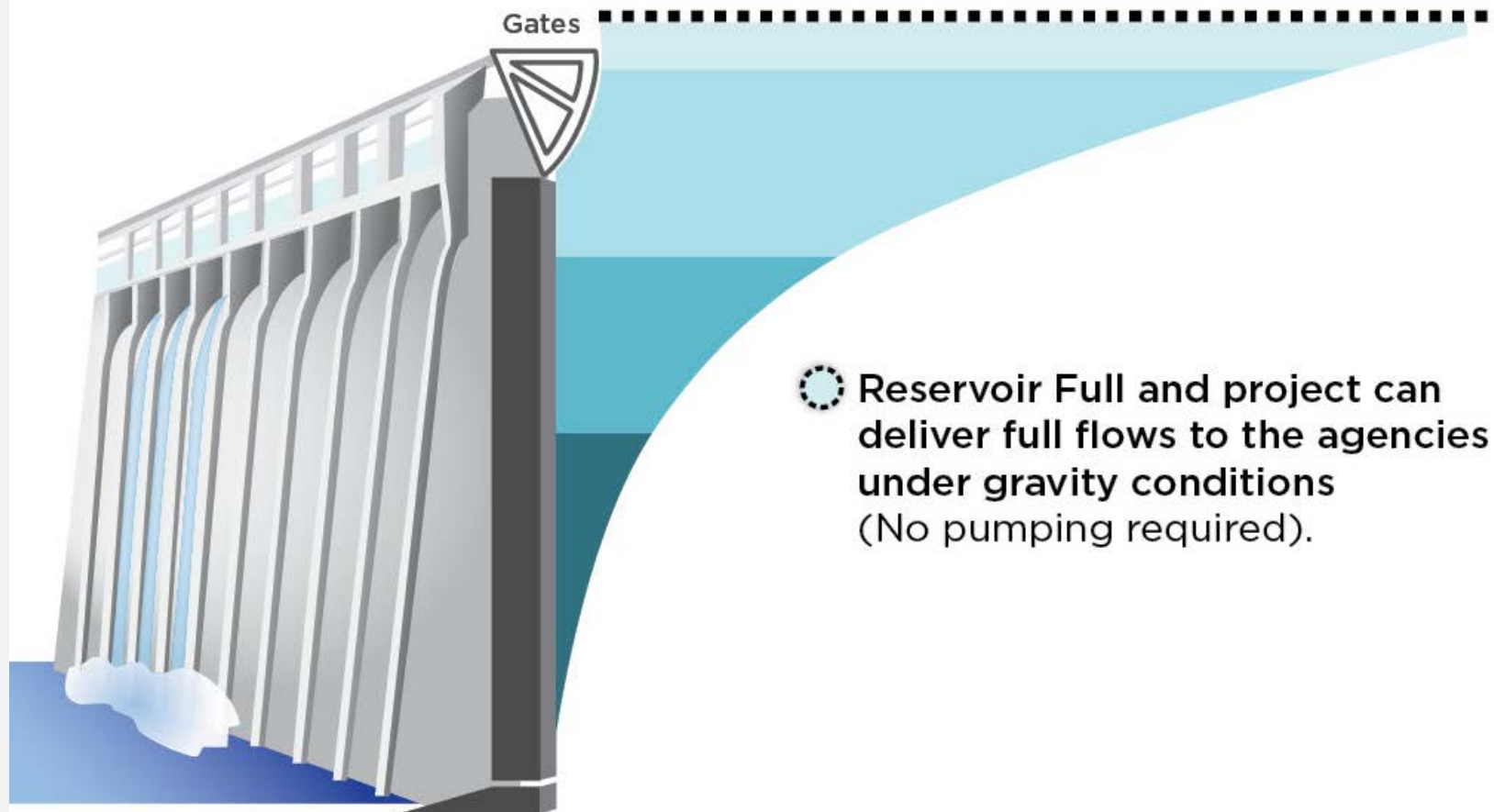
466 msl

Lake Elevation

977,000

Acre-ft in storage

# Folsom Reservoir



- Reservoir Full and project can deliver full flows to the agencies under gravity conditions (No pumping required).

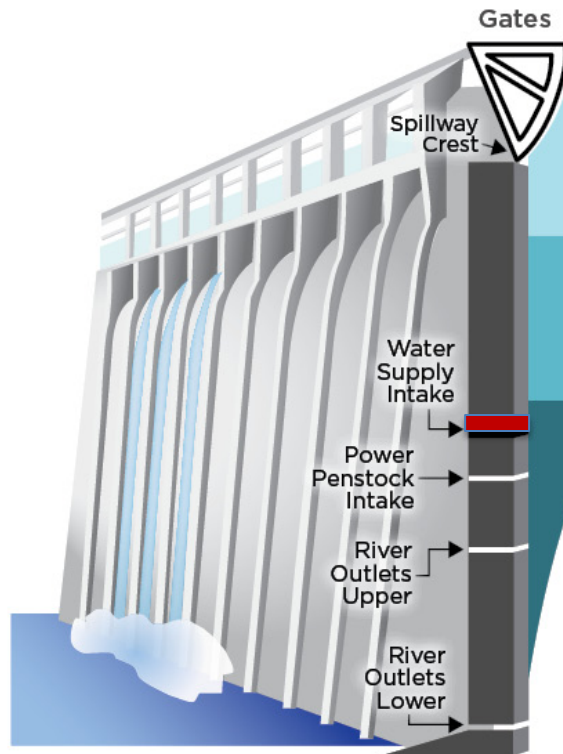
453 msl

Lake Elevation

836,000

Acre-ft in storage

# Folsom Reservoir



- Pumping is required to meet peak demands for agencies.



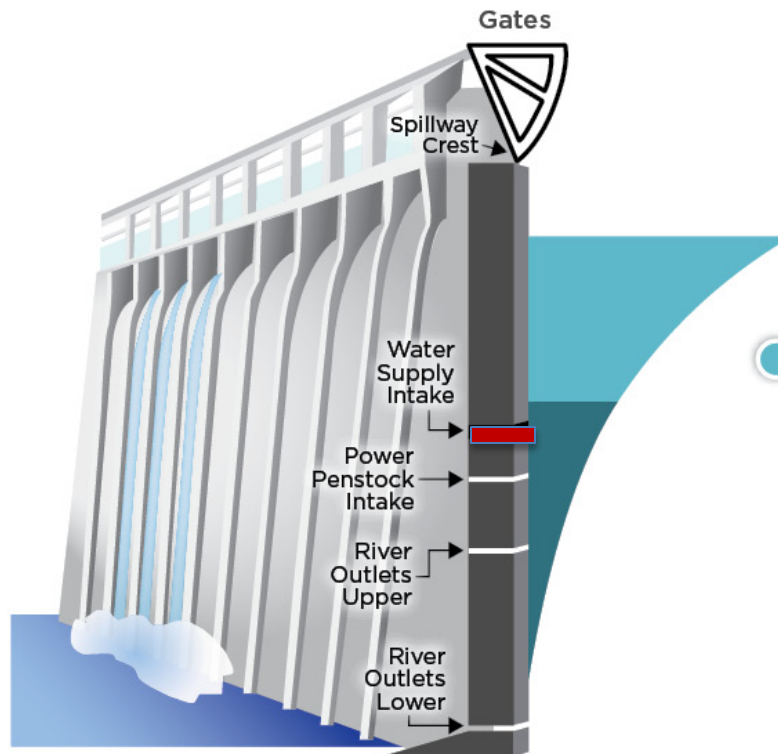
392 msl

Lake Elevation

328,000

Acre-ft in storage

# Folsom Reservoir



- Pump station capable of pumping peak demands for agencies. Below this point the pump station begins losing capacity.

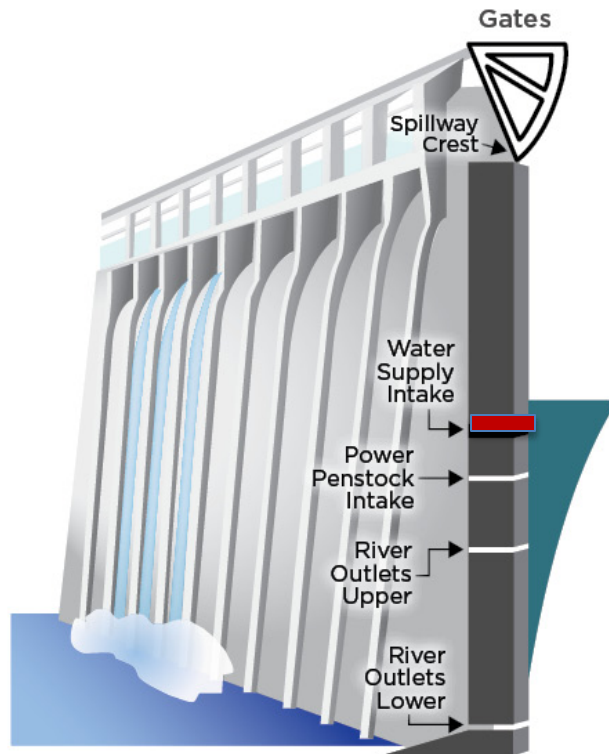
330 msl

Lake Elevation

90,000

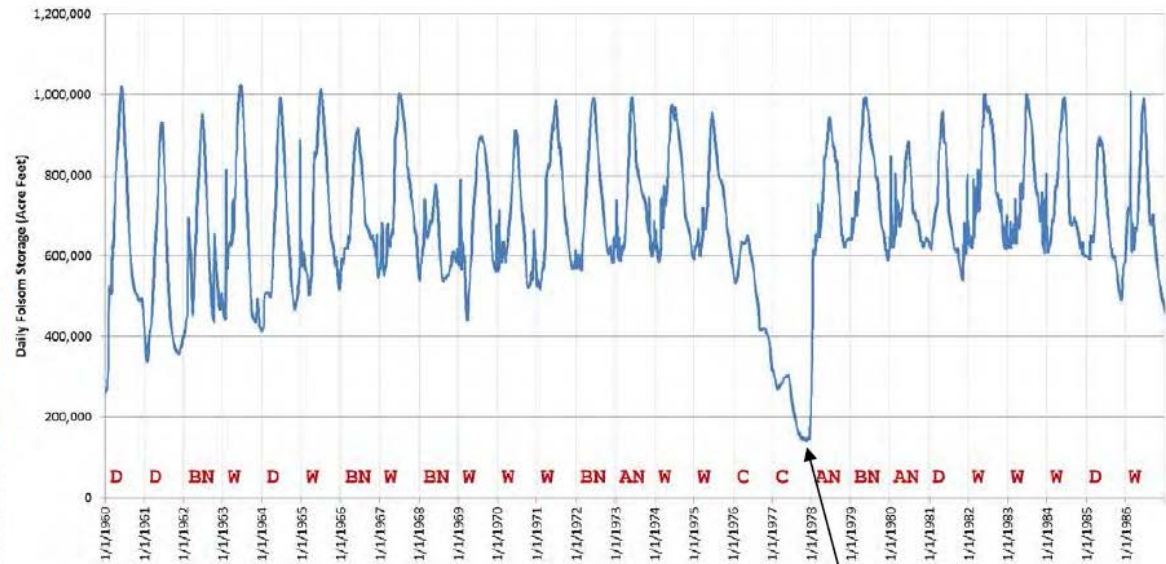
Acre-ft in storage

# Folsom Reservoir

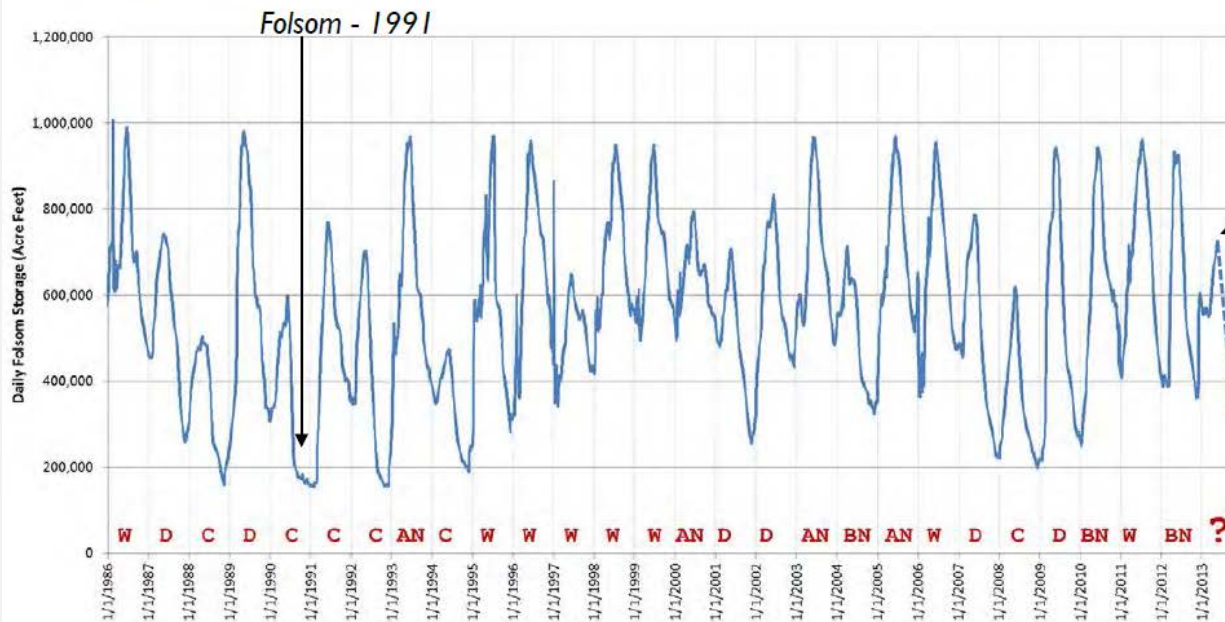


- Pump station cannot be operated due to outlet beginning to daylight.

# Historical Folsom Storage



Lowest Storage:  
11/20/77 - 140,600 AF

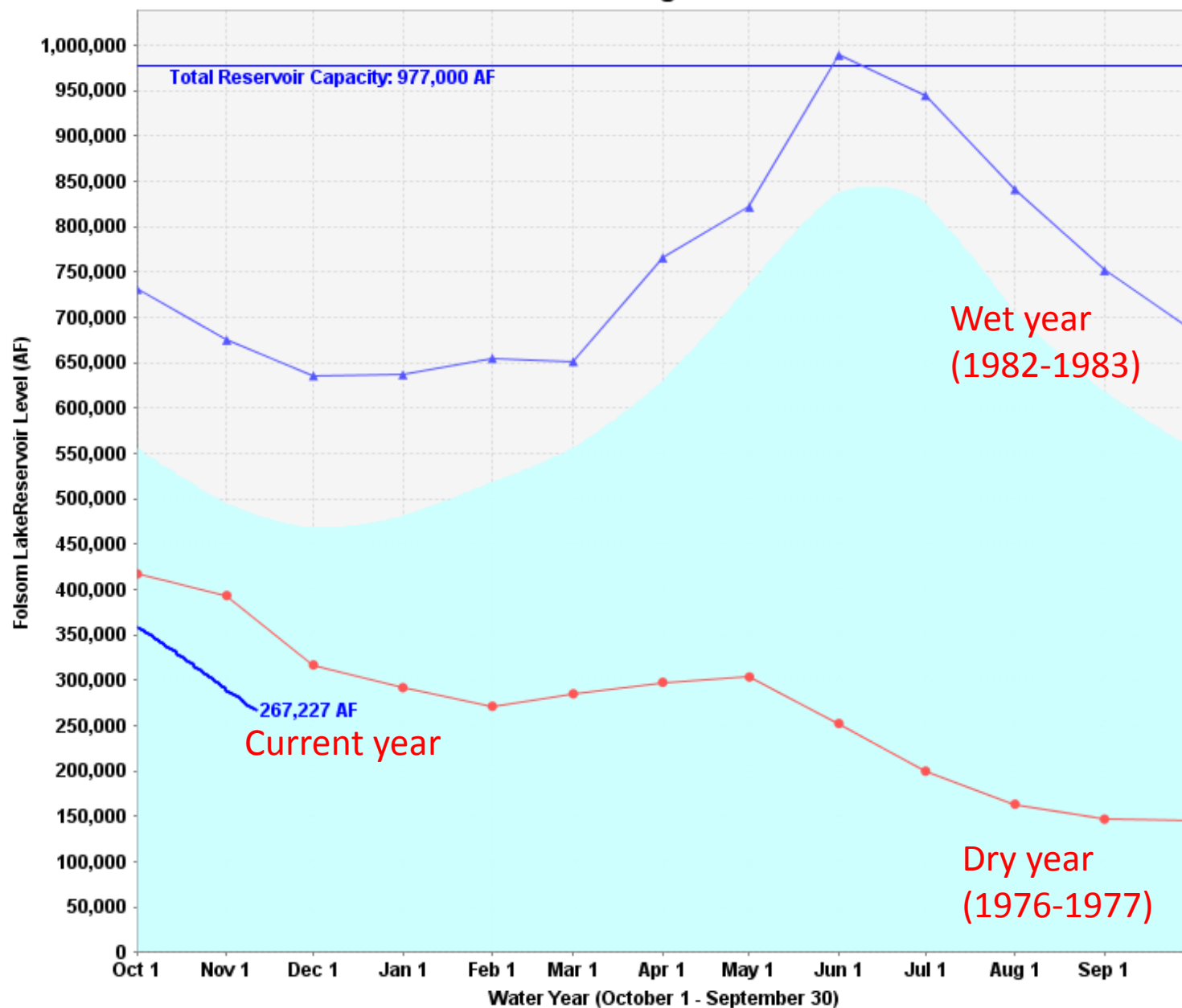


May 27, 2013  
726,000 AF

Forecasted for this  
September  
250,000 AF

*Folsom is being drawn more due to changes in regulations*

## Folsom Lake Storage Levels



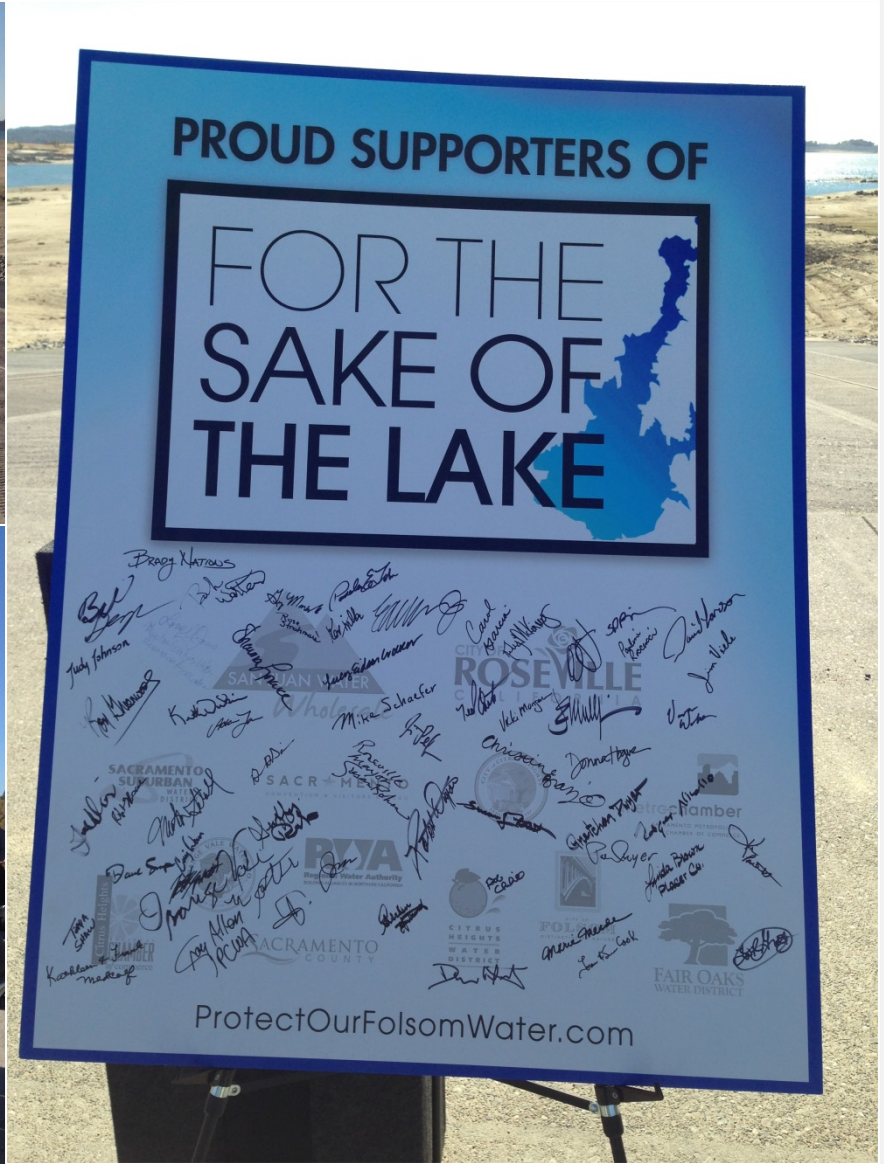
Historical Average — Total Reservoir Capacity — 1976-1977 (dry) — 1982-1983 (wet) — 2013-2014(current)



# How You Can Help Protect Your Community Water Supply...



- Tell your friends about the issue and let them know about [www.ProtectOurFolsomWater.com](http://www.ProtectOurFolsomWater.com)
- Sign up for our e-blast by providing your e-mail address.
- More 'calls to action' coming through this regional effort.



[www.ProtectOurFolsomWater.com](http://www.ProtectOurFolsomWater.com)

# How to Contact....



Sean Bigley  
Government Relations Analyst  
(916) 774-5513

[sbigley@roseville.ca.us](mailto:sbigley@roseville.ca.us)

**Thank you for supporting this effort!**